



48th ANNUAL “MORE FOR YOUR MONEY” ANGUS SALE

Saturday • October 24, 2020 • Noon

SALE SITE

*Southwest Virginia Bull Test Station Sale Barn
I-81, Exit 77 • Wytheville, VA*

To All Beef Producers,

It is my privilege to welcome you to the 48th Annual “More For Your Money” Fall Sale. It is one of the longest continuous purebred consignment sales on the East Coast. The Southwest Virginia Angus Association is sponsoring this sale as they have done for many years. The SWVAA works to support the entire beef industry in the *Great Southwest*. The SWVAA adheres to the genetic evaluation policy of the American Angus Association. As with our Spring Double-Header Sale, if you do not feel comfortable attending in person due to the impact of COVID-19, we would like to remind you that the sale will also be streamed live on Cowbuyer.com where your bids will be received in real time. If you prefer to bid by phone, please contact either Smith Reasor or myself before sale day and we will provide you with a number you can call to place your bids that day.

We have eleven consignors participating from all over Southwest Virginia and East Tennessee. We are selling cow-calf pairs and some of the calves will be ready to split from their dams. There is a nice group of fall-calving cows with baby calves as well as open and bred heifers in this sale.

Don't hesitate to give me, George T. “Buddy” Johnstone Jr., a call (620-4901 or 228-8496) or Smith Reasor, Auctioneer (620-3123). We have a nice selection of cattle from which to choose. They will be available for your inspection after 12:00 on Friday, October 23, 2020.

Southwest Virginia Angus Association hereby reserves the right in its absolute and total discretion to refuse to accept any bid from any person or individual or to issue a bid number for any reason, including but not limited to, a previous instance of non-payment in a Southwest Virginia Angus Association sale.

George T. Johnstone Jr.
Sale Coordinator



BENNETT COURAGE LADY

CONNEALY COURAGE 25L

K C F BENNETT COURAGE B884

G A R OBJECTIVE 248

OFF POUNDER W83

GHS LADY 5106

K A F MISS LADY 623

COW

DOB 4/25/19

Tatt 106

Reg. 19816880

CED	9
BW	.4
WW	50
YW	87
M	28

DDP



YON FINAL ANSWER W494



BENNETT COURAGE BEAUTY

CONNEALY COURAGE 25L

K C F BENNETT COURAGE B884

G A R OBJECTIVE 248

YON FINAL ANSWER A489

GHS SARITA 595

GHS SARITA 396

COW

DOB 3/30/19

Tatt 9595

Reg. 19826889

CED	11
BW	-.4
WW	49
YW	88
M	26

DDP



SKYWAY HILLS PRINCESS II

CONNEALY COURAGE 25L

K C F BENNETT COURAGE B884

G A R OBJECTIVE 248

RITO 9FB3 OF 5H11 FULLBACK

SKYWAY HILLS PRINCESS

SKYWAY HILLS EQUATRIS 317

COW

DOB 3/15/19

Tatt 958

Reg. 19826617

CED	
BW	
WW	
YW	
M	

DDP

B H COOPER FARM

Consignor:

Another daughter of the K C F Bennett Courage B884 bull (please see note above) out of a cow produced by George Stovall from the Sarita family. If you look through her pedigree, you will find all kinds of cow makers like S A V Final Answer 0035, C R A Bextor 872 5205 608 and S A V 8180 Traveler 004. She is also bred to K C F Bennett Palmetto G167 for a calf in May.



S A V RESOURCE 1441



SAV RESOURCE QUEEN BHC

RITO 707 OF IDEAL 3407 7075

S A V RESOURCE 1441

S A V BLACKCAP MAY 4136

PBC 707 1M F0203

SKYWAY HILLS ROSE FO203-48

SKYWAY HILLS PRIDE ROSE 170

COW

DOB 2/26/19

Tatt 107

Reg. 19825273

CED	3
BW	3.2
WW	54
YW	98
M	20

DDP

B H COOPER FARM

Consignor:

An embryo daughter of the well-known Skyway Hills Rose owned by Allen Strecker. She is sired by the Genex powerhouse, S A V Resource 1441. She will make a fantastic cow and is due to calve in April out of K C F Bennett Palmetto G167.



CONNALLY SPECIAL BHC

S A V FINAL ANSWER 0035

DOB 2/19/19

Tatt 70A

Reg. 19817623

CONNALLY CAPITALIST 028

PRIDES PITA OF CONANGA 8821

DUFF NEW EDITION 6108

BHC TEMPLETON

SKYWAY HILLS ROSE F0203-124

CED	7
BW	1.6
WW	50
YW	85
M	22

COW

Consignor: **B H COOPER FARM**

A fine Conneally Capitalist daughter of BHC Templeton, herself the product of a flush by Duff New Edition and Skyway Hill's Rose, another Alan Strecker cow. She is a flush mate to 9168. This deep bodied, well-structured heifer is bred to K C F Bennett Palmetto G167 whose EPD's are -1.3 +65 +114 +24 for a calf in May.



DAWSON FARMS ROSE 1706
(AS YEARLING)



RS GAME PLAN 112 1437



CONNALLY QUEEN BHC

S A V FINAL ANSWER 0035

DOB 2/15/19

Tatt 9168

Reg. 19826531

CONNALLY CAPITALIST 028

PRIDES PITA OF CONANGA 8821

DUFF NEW EDITION 6108

BHC TEMPLETON

SKYWAY HILLS ROSE F0203-124

CED	7
BW	1.6
WW	50
YW	85
M	22

COW

Consignor: **B H COOPER FARM**

A flush mate to 970 (please see note above). Another good mating of BHC Templeton with Conneally Capitalist. This deep bodied, feminine heifer is also bred to K C F Bennett Palmetto G167 whose EPD's are -1.3 +65 +114 +24 for a calf in April.



DAWSON FARMS ROSE 1706

COLEMAN REGIS 904

DOB 3/1/17

Tatt 1706

Reg. 18750536

HOME ACRES REGIS 415

HOME ACRES ANN 120

WAGNERS GAME PLAN 840 903

RS GAME PLAN 1220 1530

RS PREDOMINANT S8 1220

CED	14
BW	-.7
WW	44
YW	82
M	22

COW

Consignor: **DAWSON FARMS**

1706 is a young cow with 7 Pathfinders in her immediate pedigree, she is calving ease and has a 354 day calving interval. She has been i50k genomic tested and is parent qualified. She is bred to Angus Hill 6108 All In 813B for a 12/25/2020 calf.



RS GAME PLAN 112 1437

GDAR GAME DAY 449

DOB 4/5/14

Tatt 1437

Reg. 17909156

WAGNERS GAME PLAN 840 903

WAGNERS BLACKCAP ROSE W840

SCHURRGENE 2063 2916

RS SCHURRGENE R3 112

RS HIGH PLAINS N10 R3

CED	14
BW	-4.2
WW	28
YW	58
M	28

COW

Consignor: **DAWSON FARMS**

1437 has produced really good replacement females, we have 2 of her daughter in our herd. Her bull calves have been calving ease and the owners are pleased with their calves from her progeny. She has a 353 day calving interval, 7 Pathfinders in her immediate pedigree and is also i50k genomic tested. She is bred to Angus Hill 6108 All In 813B for a 12/3/2020 calf.



BELL LUCY ROSE 2139

BOYD NEW DAY 8005

DOB 2/22/13

Tatt 2139

Reg. 17537618

CED	13
BW	-.9
WW	48
YW	87
M	14

MCC DAYBREAK

MCC MISS FOCUS 134

G A R PREDESTINED

OGEECHEE LUCY ROSE 9127

THOMAS LUCY ROSE 5089

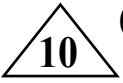
COW

Consignor: **DAWSON FARMS**

2139 is a powerful cow, she is a Daybreak daughter descending from The Thomas herd. Her udder is nearly perfect, she has good feet and is impressive to look at. She has 10 Pathfinders in her immediate pedigree. Her bull calves have been calving ease with frame. I retained breeding interest in her 2017 bull and had calves out of him this spring. They came small and have grown really well. Her 2018 daughter out of Resource will take her place in our herd. She is bred to Angus Hill 6108 All In 813B for a 2/28/2021 calf.



BELL LUCY ROSE 2139



GRAYSTONE BLACKBIRD 482

CONNEALY ONWARD

DOB 3/22/12

Tatt 482

Reg. 18404119

CED	7
BW	1.8
WW	54
YW	101
M	33

SITZ UPWARD 307R

SITZ HENRIETTA PRIDE 81M

BOYD NEW DAY 8005

GRAYSTONE BLACKBIRD 684

GRAYSTONE BLACKBIRD 6799

COW

Consignor: **GRAYSTONE FARM**

A daughter of the Genex Masterpiece sire Sitz Upward 307R out of a dam sired by Boyd New Day 8005. The Graystone Blackbird 684 cow left many productive daughters in our herd; she was a top-notch female. Nice EPD's on this proven producer. She sells with a 4/30/20 bull calf sired by Graystone Tour of Duty 486. She has been pasture exposed from 5/15/20 until 10/15/20 to Graystone Renown 507.



GRAYSTONE BLACKBIRD 251

SITZ TRAVELER 8180

DOB 4/1/11

Tatt 251

Reg. 17763776

CED	10
BW	0
WW	52
YW	96
M	25

S A V FINAL ANSWER 0035

S A V EMULOUS 8145

WAR ALLIANCE 9126 6006

GRAYSTONE BLACKBIRD 489

GRAYSTONE BLACKBIRD 684

COW

Consignor: **GRAYSTONE FARM**

An own daughter of the Genex Masterpiece sire S A V Final Answer 0035. A foundation cow for Graystone Farm. Nice EPD's on this proven producer. She sells with a 2/25/20 bull calf sired by Graystone Tour of Duty 486. She has been pasture exposed from 3/15/20 until 10/15/20 to Graystone Renown 507.



JUSTAFEU BLK PEARL BONNIE811



JUSTAFEU BLK PEARL BONNIE811

SYDGEN TRUST 6228

DOB 10/27/18

Tatt 811

Reg. 19470022

CED	10
BW	.5
WW	49
YW	93
M	27

SYDGEN BLACK PEARL 2006

SYDGEN ANITA 8611

EXAR UPSHOT 0562B

JUSTAFEU UPSHOT BONNIE 405

JUSTAFEU TARGETED BONNIE 705

COW

Consignor: **JUSTAFEU ANGUS**

A pair of young females to enhance any herd. This young cow calved unassisted at twenty-two months old and shows high milk production. A great future in her heifer calf born 9/2/20 (BW 62) sired by Mead Magnitude who boasts EPDs of -.5 +83 +157 +39. Cow sells open, calfhood vaccinated.

13 LUCAS LADY GROWTH FUND T963S

BASIN PAYWEIGHT 1682

DEER VALLEY GROWTH FUND

DEER VALLEY RITA 36113

H A IMAGE MAKER 0415

LUCAS LADY IMAGE MAKER T96J

LUCAS LADY RIGHT WAY T659N

DOB 9/22/19

Tatt 963S

Reg. 19689124

CED	5
BW	2.6
WW	72
YW	122
M	30

COW

Consignor:

LUCAS ANGUS FARM

A nice heifer sired by the Select Sires bull Deer Valley Growth Fund. 963S is a deep made attractive heifer. Her Image Maker dam is as solid of a cow as you can ask for with a WR of 104 on 9 calves, and still going strong at nearly 12 years old. A lot of maternal power in this young heifer. 963S sells open.



CONNEALY BLACK GRANITE

15 LUCAS LADY GROWTH FUND M934S

BASIN PAYWEIGHT 1682

DEER VALLEY GROWTH FUND

DEER VALLEY RITA 36113

G A R PROPHET

LUCAS LADY PROPHET M4880

LUCAS LADY IMPRESSION M0530

DOB 9/3/19

Tatt 934S

Reg. 19689121

CED	11
BW	1.1
WW	69
YW	125
M	26

COW

Consignor:

LUCAS ANGUS FARM

Here is an extremely smooth made and attractive heifer sired by the popular Select Sires bull Deer Valley Growth Fund. Backed by a great cow family, she will be a very productive female for anyone's operation. 934S has a great EPD profile. Sells open.

16 LUCAS LADY FLAT TOP 932S

CONNEALY BLACK GRANITE

WERNER FLAT TOP 4136

WERNER LADY 0304

CTS REMEDY 1T01

LUCAS LADY REMEDY M761S

LUCAS LADY SAFEGAURD M445S

DOB 9/2/19

Tatt 932S

Reg. 19689116

CED	10
BW	-.9
WW	50
YW	104
M	30

COW

Consignor:

LUCAS ANGUS FARM

A heifer sired by the Select Sires calving ease bull Werner Flat Top 4136. This moderate framed heifer has a big top in her and is solid made. Her maternal side is stacked with AI sires, Remedy, Safeguard, and Prophet. 932S sells open.

14 LUCAS LADY NIAGARA T953S

HOOVER DAM

S S NIAGARA Z29

JET S S X144

QUAKER HILL RAMPAGE 0A36

LUCAS LADY RAMPAGE T685S

LUCAS LADY IMPRESSION T0580

DOB 9/19/19

Tatt 953S

Reg. 19689142

CED	9
BW	.5
WW	65
YW	122
M	24

COW

Consignor:

LUCAS ANGUS FARM

A nice heifer sired by the Select Sires performance leader S S Niagara Z29. Her Rampage dam is a big and stout cow with an ideal udder. Solid set of EPD's on this heifer. 953S sells open.



S S NIAGARA Z29



K C F BENNETT ABSOLUTE

17 LUCAS LADY ACCLAIM 872S

JINDRA 3RD DIMENSION

DOB 9/17/18

JINDRA ACCLAIM

Tatt 872S

JINDRA BLACKBIRD LASSY 1111

Reg. 19446601

K C F BENNETT UPWARD W538

CED	-1
BW	1.9
WW	77
YW	135
M	25

LUCAS LADY UPWARD W538 3800

LUCAS LADY KCF 6595 5MA27

COW

OHP

Consignor: LUCAS ANGUS FARM

A big frame stout bred heifer sired by the popular Accelerated Genetics bull, Jindra Acclaim. A great opportunity to purchase a heifer out of one of Lucas Farm's best cows. 872S' dam has a WR of 5@106 and is an elite pathfinder dam. 872S is bred to the powerful herd bull Lucas Whitlock 7130 whose EPD's are +2 +2.9 +79 +141 +24 \$B +148

18 LUCAS LADY REMEDY M761S

CONNEALY THUNDER

DOB 9/8/17

CTS REMEDY 1T01

Tatt 761S

CTS 7V03 BELLEMERE MAID 9T02

Reg. 19079861

PA SAFEGUARD 021

CED	3
BW	.2
WW	57
YW	109
M	25

LUCAS LADY SAFEGAURD M445S

LUCAS LADY PROPHET M256S

COW

Consignor: LUCAS ANGUS FARM

761S is a moderate framed 3 year old cow sired by the Select Sires foot improver bull CTS Remedy 1T01. She sells with a heifer calf at side sired by Deer Valley Wall Street born 9/26/2020 (BW 65 lbs).

19 LUCAS LADY COMMONWEALTH T673

K C F BENNETT ABSOLUTE

DOB 9/23/16

K C F BENNETT COMMONWEALTH

Tatt 673S

K C F MISS QUALITY P164

Reg. 18739158

K C F BENNETT UPWARD W538

LUCAS LADY UPWARD W538 T389N

LUCAS LADY EXT 3S24

CED	9
BW	.2
WW	58
YW	106
M	29

COW

Consignor: LUCAS ANGUS FARM

This young 4 year old cow is sired by KCF Bennett Commonwealth, out of an Upward cow. This cross has worked extremely well for us, making good footed, fertile, and very functional cattle. Her 2019 bull calf is currently on test at Gretna. She sells with a heifer calf at side sired by the Semex and Lucas Farm bull Lucas Tonic born 9/23/2020 (BW 69 lbs). This is the first female we have offered out of Tonic. They are very attractive cattle with extra bone and shape. This is a nice young pair.

20 LUCAS LADY SAFEGAURD 419J

G A R NEW DESIGN 5050

DOB 1/30/14

PA SAFEGUARD 021

Tatt 419J

PA LORNA MARSHALL 2905-730

Reg. 17779244

CONNEALY LEADTIME

LUCAS LADY LEADTIME 0N20

LUCAS KATINKA 7M6

CED	-3
BW	2.7
WW	47
YW	88
M	30

COW

Consignor: LUCAS ANGUS FARM

A very attractive deep bodied cow sired by the ABS bull PA Safeguard 021. 419J is a nice uddered cow her Leadtime dam was one of our favorites and was a solid producing cow at 15 years of age. Her 2019 bull calf is headed to the BCIA bull test in October. She is bred to calve before sale day to Deer Valley Fox Trot who is a stout bull in the Accelerated Genetics lineup.



CONNEALY THUNDER

21

MSA MISS BLACKBIRD 7E18

EF COMPLEMENT 8088

DOB 10/8/17

Tatt 7E18

Reg. 18913427

CED	9
BW	.3
WW	62
YW	101
M	24

EF COMMANDO 1366

RIVERBEND YOUNG LUCY W1470

PA FULL POWER 1208

MSA MISS BLACKBIRD 5C12

MSA MISS BLACKBIRD 2Z16

COW

Consignor: **MOSSY SPRING FARM**

This exceptional young cow by the Genex calving-ease and maternal sire, EF Commando 1366, offers explosive early growth and excellent carcass EPDs. Her dam and maternal grandam have sold in previous SW Angus sales and were sale day favorites. 7E18 is a moderately-framed female who ranks in the top 25% for 10 different EPDs or \$Values. This impressive female is AI-bred to the scale-crushing Select Sires phenom, Connealy Blackhawk 6198, due 1/11/2021.



CONNEALLY BLACKHAWK 6198

22

MSA MISS BLACKBIRD 7E3

B/R FUTURE DIRECTION 4268

DOB 2/28/17

Tatt 7E3

Reg. 18773684

CED	18
BW	-2.7
WW	46
YW	77
M	31

WR JOURNEY-1X74

2 BAR 5050 NEW DESIGN 7831

A A R TEN X 7008 S A

MSA MISS BLACKBIRD 3A2

MSA MISS BLACKBIRD 8U2

COW

Consignor: **MOSSY SPRING FARM**

Here is a great opportunity to own a daughter by the ABS Global calving-ease Pathfinder sire, WR Journey-1X74. 7E3 ranks among the elite group (top 1%) of Angus dams in her double-digit CED (+18) and CEM (+16) genomic profile. Her dam was one of the sale toppers who sold to the Ogle family in the 2018 SW VA Finest Sale. She did an excellent job raising her first calf with an adjusted WW of 632. This outstanding female is AI-bred to the Select Sires superstar, Connealy Blackhawk 6198, due 12/28/2020. Certified and accredited herd.



CONNEALY COUNSELOR

23

NMA MISS MARLO G102

V D A R HERO 7072

DOB 10/8/19

Tatt G102

Reg. 19539676

V D A R HERO 5666

V D A R LUCY 4361

ECHO RIDGE CONCRETE 2531

NMA MISS FUSION D102

S W FUSION 23S

CED	10
BW	-.2
WW	48
YW	81
M	27

COW

DDP

Consignor: **NEW MORNING ANGUS**

A daughter of V D A R Hero 5666 who has worked well in Charlie Horne's herd. Her dam is a granddaughter of both G A R Concrete and G A R Fusion. A nice open yearling heifer.

24

NMA ENCHANTRESS G101

V D A R HERO 7072

DOB 10/4/19

Tatt G101

Reg. 19539672

V D A R HERO 5666

V D A R LUCY 4361

CONNEALY COUNSELOR

NMA ENCHANTRESS A34

DOWNS Y670 OF OBJECTIVE 8128

CED	9
BW	-.4
WW	41
YW	75
M	29

COW

Consignor: **NEW MORNING ANGUS**

Another daughter of V D A R Hero 5666 who has left many productive females in the New Morning program. Her dam is a daughter of Connealy Counselor and comes from the Basin Enchantress cow family. A nice open yearling heifer.

25

NMA LUCY G98 OF E92 1867

S A V IRON MOUNTAIN 8066

S A V ANGUS VALLEY 1867

S A V MAY 2397

G A R DAYBREAK 6882

NMA VERA E92 OF 6 6882

SKY KING VERA 6

DOB 9/11/19

Tatt G98

Reg. 19517979

CED	9
BW	-.9
WW	55
YW	101
M	21

COW

NEW MORNING ANGUS

Consignor:

A daughter of the very popular S A V Angus Valley 1867 out of a dam that is a granddaughter of both MCC Daybreak and SydGen C C & 7. She is a member of the Lucy cow family. Nice EPD's on this open yearling heifer.



S A V ANGUS VALLEY 1867

26

NMA RITA G96 OF 8939 5666

V D A R HERO 7072

V D A R HERO 5666

V D A R LUCY 4361

G A R RETAIL PRODUCT

RITA 8939 OF RITA 4D18 RP

RITA 4D18 OF RITA 7R11 338

DOB 9/7/19

Tatt G96

Reg. 19517972

CED	4
BW	2.6
WW	50
YW	80
M	28

COW

NEW MORNING ANGUS

Consignor:

A daughter of the V D A R Hero 5666 bull. Her dam is a daughter of G A R Retail Product. She comes from the Rita cow family at New Morning Farm. This heifer's dam was bred in the Wehrmann Angus program. Another nice open yearling heifer.

27

NMA LUCY G94 9625 5666

V D A R HERO 7072

V D A R HERO 5666

V D A R LUCY 4361

S S OBJECTIVE T510 0T26

SARRATTS LUCY 9625

OGEECHIE LUCY 348

DOB 9/5/19

Tatt G94

Reg. 19517973

CED	12
BW	-.7
WW	51
YW	88
M	24

COW

NEW MORNING ANGUS

Consignor:

Another herd building female sired by the outcross sire V D A R Hero 5666. Her dam is a daughter of the Angus breed legend, S S Objective T510 0T26. She descends from the Lucy cow family. Nice balanced EPD's on this open yearling heifer.

28

NMA BLACK GARNET G82 E72 E91

MUSGRAVE AVIATOR

NMA AVAITOR E91

DIAMOND ANNIE 078B

G A R DAYBREAK 6882

NMA BLACK GARNET E72

NMA BLACK GARNET 8017 6128

DOB 8/18/19

Tatt G82

Reg. 19517964

CED	9
BW	-1.0
WW	61
YW	105
M	25

COW

NEW MORNING ANGUS

Consignor:

A daughter of NMA Avaitor E91. Her dam is a daughter of G A R Daybreak 6882. Nice EPD's on this open yearling heifer.



V D A R HERO 7072



MCC DAYBREAK



NMA RITA F91 8939 5Q11

CONNEALY BLACK GRANITE

DOB 9/4/18

QHF WWA BLACK ONYX 5Q11

Tatt F91

WILKS BLACKCAP 0D82

Reg. 19206830

G A R RETAIL PRODUCT

CED	10
BW	.5
WW	71
YW	107
M	39

RITA 8939 OF RITA 4D18 RP

RITA 4D18 OF RITA 7R11 338

COW

Consignor: **NEW MORNING ANGUS**

A granddaughter of both the ABS bull Connealy Black Granite and G A R Retail Product. She comes from the Rita cow family at New Morning Farm. Nice EPD's on this bred heifer. Sells due to calve 11/20/20 to the service of NMA Payweight F83, a son of the very popular Basin Payweight 1075.



NMA ENCHANTRESS E913

MCC DAYBREAK

DOB 9/26/17

G A R DAYBREAK 6882

Tatt E913

G A R 5050 NEW DESIGN N549

Reg. 18891191

G A R OBJECTIVE 8128

CED	5
BW	1.3
WW	60
YW	109
M	25

DOWNES Y670 OF OBJECTIVE 8128

BASIN ENCHANTRESS 162P

COW

Consignor: **NEW MORNING ANGUS**

Just a three year old daughter of G A R Daybreak 6882 who left many good progeny in the New Morning herd. She is a member of the Basin Enchantress cow family. Great EPD's with a \$B of +153 (Top 10% of the breed). She sells with a 8/31/20 heifer calf sired by NMA Payweight F83. Heifer calf's EPD's are +0 +3.3 +77 +134 +30. WW and YW are in the Top 4% of the Angus breed.



NMA VERA E92 OF 6 6882

MCC DAYBREAK

DOB 9/2/17

G A R DAYBREAK 6882

Tatt E92

G A R 5050 NEW DESIGN N549

Reg. 18882249

SYDGEN C C & 7

CED	12
BW	-1.2
WW	50
YW	94
M	20

SKY KING VERA 6

SARRATTS LUCY 9625

COW

Consignor: **NEW MORNING ANGUS**

A daughter of G A R Daybreak 6882, the son of the very popular MCC Daybreak, used successfully in Charlie Horne's herd. Her dam is sired by the ABS bull, SydGen C C & 7 and is out of the Lucy cow family. Just a three year old with balanced EPD's. Sells with a 8/16/20 heifer calf sired by NMA Payweight F83, the Basin Payweight 1075 son being used in the New Morning herd. Heifer calf's EPD's are +6 +1.2 +70 +124 +28. WW and YW are in the Top 10% of the Angus breed.



NMA HYALITE C910 612A 0562

G A R NEW DESIGN 5050

DOB 9/29/15

G A R 6060 NEW DESIGN 0562

Tatt C910

DRMCTR OBJECTIVE 7J57

Reg. 18224114

VDAR DURACELL 2752

CED	-6
BW	5.2
WW	43
YW	82
M	31

NMA HYALITE 612A OF 8564

VDAR HYALITE 8564

COW

Consignor: **NEW MORNING ANGUS**

A daughter of a bull bred in the Gardiner Angus program, G A R 6060 New Design 0562, out of a dam bred in the Van Dyke Angus herd in Montana. Just a five year old reaching her prime production years. She is due 12/29/20 to the service of NMA Payweight F83 whose EPD's are -2 +4.2 +92 +155 +35 \$B +187 is in the Top 2%. WW and YW are in the Top 1% of the Angus breed.



G A R NEW DESIGN 5050



SARRATTS LUCY 9625

S S TRAVELER 6807 T510

DOB 9/2/09

S S OBJECTIVE T510 0T26

Tatt 9625

S S MISS RITA R011 7R8

Reg. 16679171

TWIN VALLEY PRECISION E161

CED	12
BW	-.8
WW	46
YW	84
M	22

OGEECHEE LUCY 348

ROYAL LUCY GIRL 901

COW

NEW MORNING ANGUS

Consignor:

A proven producer sired by the Angus Breed Legend, S S Objective T510 0T26. Her dam is from the Lucy cow family. She has left many good progeny in the New Morning herd. She is due to calve 12/28/20 to the service of NMA Payweight F83 whose EPD's are -2 +4.2 +92 +155 +35. His \$B +187 is in the Top 2% of the Angus breed. WW and YW are in the Top 1%.



BASIN PAYWEIGHT 107S



SPRINGFIELD LASS 8076

PAPA FORTE 1921

DOB 10/1/08

WOODHILL FORESIGHT

Tatt 8076

BON VIEW GAMMER 85

Reg. 16383399

GARDENS EXPEDITION

CED	-1
BW	3.6
WW	48
YW	90
M	24

SPRINGFIELD LASS 5088

PACK POWER LASS 24E

COW

NEW MORNING ANGUS

Consignor:

A daughter of Woodhill Foresight out of a female from the Leachman Lass cow family. This proven producer was bred in the Springfield Angus herd in Louisburg, NC. She sells due to calve on 11/25/20 to NMA Payweight F83 whose EPD's are -2 +4.2 +92 +155 +35. His \$B +187 is in the Top 2% of the Angus breed. WW and YW are in the Top 1%.



RIVERS BEND BLACKCAP 151

CONNEALY CONSENSUS

DOB 3/24/18

K C F BENNETT FORTRESS

Tatt 1511

THOMAS PATRICIA 9705

LEMMON OBJECTIVE Y40

RIVERS BEND RITO R151

LEMMON BLACKCAP Z97

Reg. 19671364

CED	-2
BW	3.1
WW	67
YW	111
M	25

COW

RIVERS BEND RANCH

Consignor:

A daughter of the popular KCF Bennett Fortress. Attractive, deep bodied cow. Sells AI bred to Werner Flat Top 16 on 12/19/19, -2, 53, 113. She has been pasture exposed to our resident herd sire KCF Bennett E533, a Basin Payweight son whose EPDs are +8, +.6, +70, +125. Breeding update on sale day.



CONNEALY COMRADE 1385



RIVERS BEND ERICA

CONNEALY CONSENSUS 7229

DOB 3/18/18

CONNEALY COMRADE 1385

Tatt 96C1

HAPPY GEE OF CONANGA 919

PA FORTITUDE 2500

PVF FORTITUDE 342

PVF TOTAL 34

Reg. 19670692

CED	15
BW	-3.5
WW	44
YW	89
M	33

COW

RIVERS BEND RANCH

Consignor:

A daughter of Connealy Comrade 1385 with Top 1% BW & double digit CED. Sells AI bred to Werner Flat Top 16 on 12/19/19, -2, 53, 113. She has been pasture exposed to our resident herd sire KCF Bennett E533, a Basin Payweight son whose EPDs are +8, +.6, +70, +125. Breeding update on sale day.

37 RIVERS BEND BLACKCAP

S S OBJECTIVE T510 0T26

LEMMON OBJECTIVE Y40

JARRELL MISS LADY STAR 73U

G A R NEW DESIGN 5050

LEMMON COQUETTE Z81

JARRELL COQUETTE 30U

COW

Consignor: **RIVERS BEND RANCH**

A proven cow from the Objective line. Sells with a heifer calf by her side 9/16/20 sired by Select Sires MOGCK Entice whose EPD's are +5, +2.7, +74, +136.

DOB 11/20/16

Tatt R128

Reg. 19552796

CED	0
BW	3.5
WW	52
YW	91
M	22



S S OBJECTIVE T510 0T26

38 RIVERS BEND ERICA 220

S S OBJECTIVE T510 0T26

LEMMON OBJECTIVE Y40

JARRELL MISS LADY STAR 73U

LEMMON 5050 W480

LEMMON ERICA Z140

JARRELL ERICA 25W

COW

Consignor: **RIVERS BEND RANCH**

A nice, proven cow from the Objective line with low birth weight & Top 1% CED. Sells with bull calf by her side, 6/12/20 sired by our resident herd sire KCF Bennett E533, a Basin Payweight son whose EPDs are +8, +.6, +70, +125. She is rebred to the same bull.

DOB 11/7/16

Tatt R130

Reg. 19629575

CED	16
BW	-1.6
WW	41
YW	79
M	29

39 GHS EPIC EILEEN 5117

SCHURRTOP E267 X687

OFF POUNDER W83

OAK FRONT JF EMPRESS 83

DALTONS PROTEGE 829

GHS EPIC EILEEN 172S

TOUCHSTONE EPIC EILEEN B445

COW

Consignor:

RIVERS BEND RANCH

A proven producer from the Schurrtop family. Sells AI bred on 12/19/19 to the popular bull Dually +4, +1.8, +94, +165 who ranks in the Top 1% for WW & YW. She has been pasture exposed to our resident herd sire KCF Bennett E533, a Basin Payweight son whose EPDs are +8, +.6, +70, +125. Breeding update on sale day.

DOB 10/27/15

Tatt 5117

Reg. 18484475

CED	2
BW	1.8
WW	49
YW	90
M	30



GAR-EGL PROTEGE

40 GHS LASS 7131

GAR-EGL PROTEGE

DALTONS RITO 1138 OF E24

DALTONS BELLE ROSE 6268

CONNEALY CAPITALIST 028

W H S CAPITALIST LASS A5

W H S PREDESTINED LASS 77T

COW

Consignor:

STOVALL LIVESTOCK

A good daughter out of our maternal sibling to WHS Limelight 64V. Notice that her WW, CW and REA EPD's and \$W index rank in the top 10% of the breed and her \$B (+136), \$C (+243), \$M (+67) and YW EPDs (+112) also rank in the top 25%. Bred to WHS High Way 44G for a December calf.

DOB 11/3/17

Tatt 7131

Reg. 19222276

CED	4
BW	2.1
WW	67
YW	112
M	27

41

GHS ERICA 7128EXAR UPSHOT 0562B

DOB 10/26/17

Tatt 7128

Reg. 19222304

GHS UPSHOT 440CSFCC BLACKBIRD 444 9T9 EXTLD REDIRECT 11GHS ERICA T22 11 001GHS ERICA 001 OF 561 ELIXIR

CED	0
BW	3.4
WW	60
YW	108
M	36

COW

Consignor:

STOVALL LIVESTOCK

A cow that traces back to a 6807 daughter from the Lynn Brae herd. Her GHS Upshot 440 sire has made some fantastic daughters for us. Her \$M (+71), \$W (+69), \$B (+145), and \$C (+259) rank in the top 15% of the breed. She is bred to WHS High Weigh 44G for an early March calf.

**EXAR UPSHOT 0562B**

42

GHS ERICA 793CONNEALY CONSENSUS

DOB 9/28/17

Tatt 793

Reg. 19222286

K C F BENNETT FORTRESSTHOMAS PATRICIA 9705CONNEALY LEAD ONGHS ERICA 328BLACK VENTURE

CED	11
BW	-.3
WW	59
YW	105
M	34

COW

Consignor:

STOVALL LIVESTOCK

A K C F Bennett Fortress daughter out of Connealy Lead On cow, out of the Immortal N Bar Emulation EXT. Her Milk EPD ranks in the top 4%. She should raise big stout calves. She is bred to WHS High Weigh 44G whose EPDs are +.4 +66 +116 +28 for an early March calf.

43

GHS RITA 782BALDRIDGE WAYLON W34

DOB 9/24/17

Tatt 782

Reg. 19222290

BALDRIDGE JENNINGS Z064BALDRIDGE MAVERICK T43HM TEN X 40UGHS RITA 393GHS RITA 015S 6EM6 T22

CED	1
BW	2.3
WW	63
YW	98
M	20

COW

Consignor:

STOVALL LIVESTOCK

A Baldridge Jennings Z064 daughter out of a daughter from a Mullins Angus and a Weherman cow. She will be the kind to bring home big calves. She is bred to WHS High Weigh 44G, a son of EWA High Weigh 3123 bred by Shelton Angus for a late February calf.

**CONNEALY THUNDER**

44

GHS CLOVA 780HM TEN X 40U

DOB 9/24/17

Tatt 780

Reg. 19222294

OFF PC C390OAK FRONT BANBANA 390CONNEALY THUNDERGHS CLOVA 452GHS CLOVA S926 I87 R40

CED	7
BW	.6
WW	55
YW	95
M	32

COW

Consignor:

STOVALL LIVESTOCK

This cow is out of a bull from Kinsey's Oak Front Farms that was a son of the bull we bought from Mullins Angus Farm. Her Dam is a Connealy Thunder daughter from the excellent Clova cow family and her great grandsire is KMK Alliance 6595 I87. Bred to WHS High Weigh 44G for a February calf.

45

GHS CLOVA 765

CONNEALY CONSENSUS

K C F BENNETT FORTRESS

THOMAS PATRICIA 9705

NICHOLS EXTRA K205

GHS CLOVA 129S

JANASTCI 6I6 NOBLE 036

COW

DOB 9/21/17

Tatt 765

Reg. 19222279

CED	9
BW	.7
WW	64
YW	114
M	29



K C F BENNETT FORTRESS

46

GHS BLACKBIRD 763

BALDRIDGE WAYLON W34

BALDRIDGE JENNINGS Z064

BALDRIDGE MAVERICK T43

SITZ UPWARD 307R

MA F 14U6

MA F 11W22

COW

DOB 9/20/17

Tatt 763

Reg. 19222305

CED	6
BW	-.3
WW	55
YW	91
M	25

47

GHS BLACKBIRD 732

YON FINAL ANSWER A489

GHS A489 577

GHS CLOVA 324

CONNEALY COMRADE 1385

GHS BLACKBIRD 527

GHS BLACKBIRD S929 5664 M223

COW

DOB 9/11/17

Tatt 732

Reg. 19222298

CED	10
BW	-1.5
WW	44
YW	95
M	33

STOVALL LIVESTOCK

A Baldridge Jennings Z064 daughter out of a very good Sitz Upward 307R daughter who came from Mullins Angus Farm. She will calve in early February to WHS High Weigh 44G whose EPDs are +.4 +66 +116 +28 \$B +159 \$C +285.



S A V FINAL ANSWER 0035

48

GHS CLOVA 75

S A V FINAL ANSWER 0035

K C F BENNETT ABSOLUTE

THOMAS MISS LUCY 5152

CONNEALY COUNSELOR

GHS CLOVA 531

GHS CLOVA 129S

COW

DOB 8/15/17

Tatt 75

Reg. 19222299

CED	11
BW	-2.2
WW	51
YW	99
M	33

STOVALL LIVESTOCK

AKCF Bennett Absolute daughter out of a Connealy Counselor daughter from the Clova cow family. Her Marbling EPD (+.68), \$W (+63), and \$B (+140) rank in the top 25% of the breed. She is bred to WHS High Weigh 44G whose EPDs read +.4 +66 +116 +28 for a calf in March.



TAYLOR BLACKBIRD 726

G A R PROPHET

DOB 10/5/17

Tatt 726

Reg. 18914200

WILLIAMS PROPHET 834-190

2 BAR 5050 NEW DESIGN 0494

GRAYSTONE GAME DAY 443

TAYLOR BLACKBIRD 1521

BRF BLACKBIRD T15 922

CED	8
BW	1.4
WW	68
YW	117
M	30

COW

Consignor:

TAYLOR ANGUS

A young granddaughter of the Select Sires bull, G A R Prophet out of a dam from the Blackbird cow family. Nice EPD's on this three year old female. Sells pasture exposed from 4/1/20 until 7/23/20 to Williams Treasure 603-411 whose EPD's are +12 +.5 +76 +145 +23. Should have a calf in January or February 2021. Breeding update sale day.



WILKS RITA 7377



WB BLACKCAP G472

BASIN PAYWEIGHT 006S

DOB 12/11/19

Tatt G472

Reg. 19605161

BASIN PAYWEIGHT 1682

21AR O LASS 7017

CONNEALY ONWARD

DEER VALLEY BLACKCAP 8972

KAHN BLACKCAP M31

CED	4
BW	2.5
WW	81
YW	138
M	25

COW

Consignor:

WALKERS BRANCH ANGUS

WB Blackcap G472 is a deep bodied, easy fleshing 1682 daughter out of a highly productive Onward daughter, Deer Valley Blackcap 8972. G472 ranks in the top 2 % for WW and \$W and ranks in the top 3% for YW and \$M. Sells open.



WILKS RITA 7377

HA OUTSIDE 3008

DOB 9/18/17

Tatt 7377

Reg. 18884383

HA COWBOY UP 5405

HA BLACKCAP LADY 1602

SMR 585B OUTCROSS 0507

SPRUCE MTN RITA 3036

MONARCH RITA 1106

CED	8
BW	1.0
WW	52
YW	104
M	25

COW

Consignor:

WALKERS BRANCH ANGUS

A super attractive, long spined Cowboy Up daughter that stems from a dam who descends from the Spruce Mountain and Evans Farms donor Monarch Rita 1106. She sells with a bull calf by VAR Power Play born 9/14/20.



TAYLOR BLACKBIRD 1521

GDAR GAME DAY 449

DOB 5/5/15

Tatt 1521

Reg. 18125597

GRAYSTONE GAME DAY 443

GRAYSTONE BLACKBIRD 561

BRF OBJECTIVE 5118 T23

BRF BLACKBIRD T15 922

BRF BLACKBIRD 03 T15

CED	4
BW	2.0
WW	56
YW	97
M	26

COW

Consignor:

TAYLOR ANGUS

A granddaughter of the Genex bull G D A R Game Day 449 out of the Blackbird cow family. Just a five-year-old proven producer. Balanced EPD's on this female. She was pasture exposed from 12/21/19 until 6/15/20 to Taylor Fortress 500 whose EPD's are +10 +.3 +75 +135 +22. Should calve in November or December 2020. Breeding update sale day.



GDAR GAME DAY 449

ONLINE BIDDING



Pre-Registration & Pre-Approval Required

**Contact Aaron Ray Tompkins
336.363.4639**

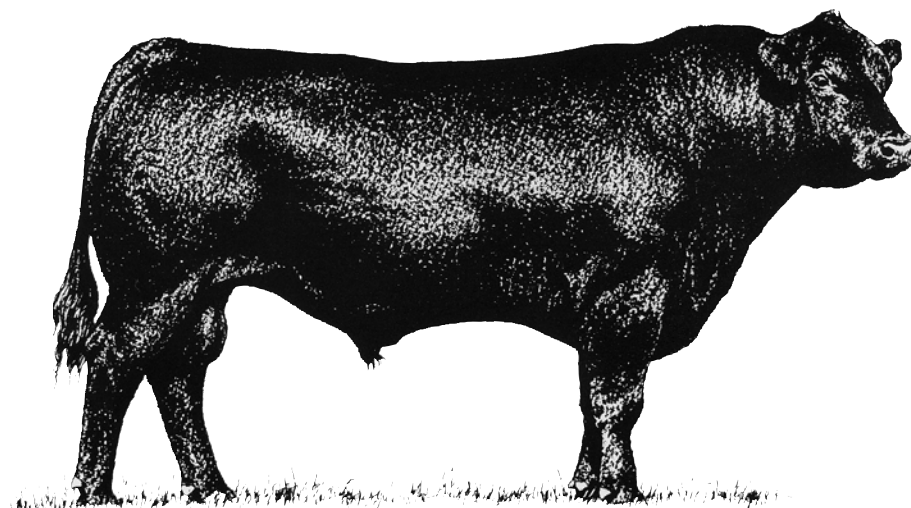
**LIVE INTERNET BIDDING AT
www.cowbuyer.com**

- View/bid online in Real Time
- **Registration is required.** Please register at least one (1) hour prior to sale time at www.cowbuyer.com
- High Speed Internet is required. Slower speed will not permit you to bid and keep pace in real time.
- Terms: Purchasing online constitutes a legal contract and promise for payment of purchases. All purchases must be paid within ten (10) days of sale date and prior to load out or delivery of cattle purchased.
- Cowbuyer LLC is a service provider and is not responsible for the activity or inactivity of any technology, internet connection at the sale site or connection and technology of the bidders.
- No App required on mobile devices.

Questions please contact:

Aaron Ray Tompkins – 336-363-4639

SOUTHWEST VIRGINIA'S FINEST ANGUS SALE



SATURDAY, DECEMBER 5, 2020

12 noon • Washington County Fairgrounds

Abingdon, VA

Selling Performance Tested Bulls & Registered Females

